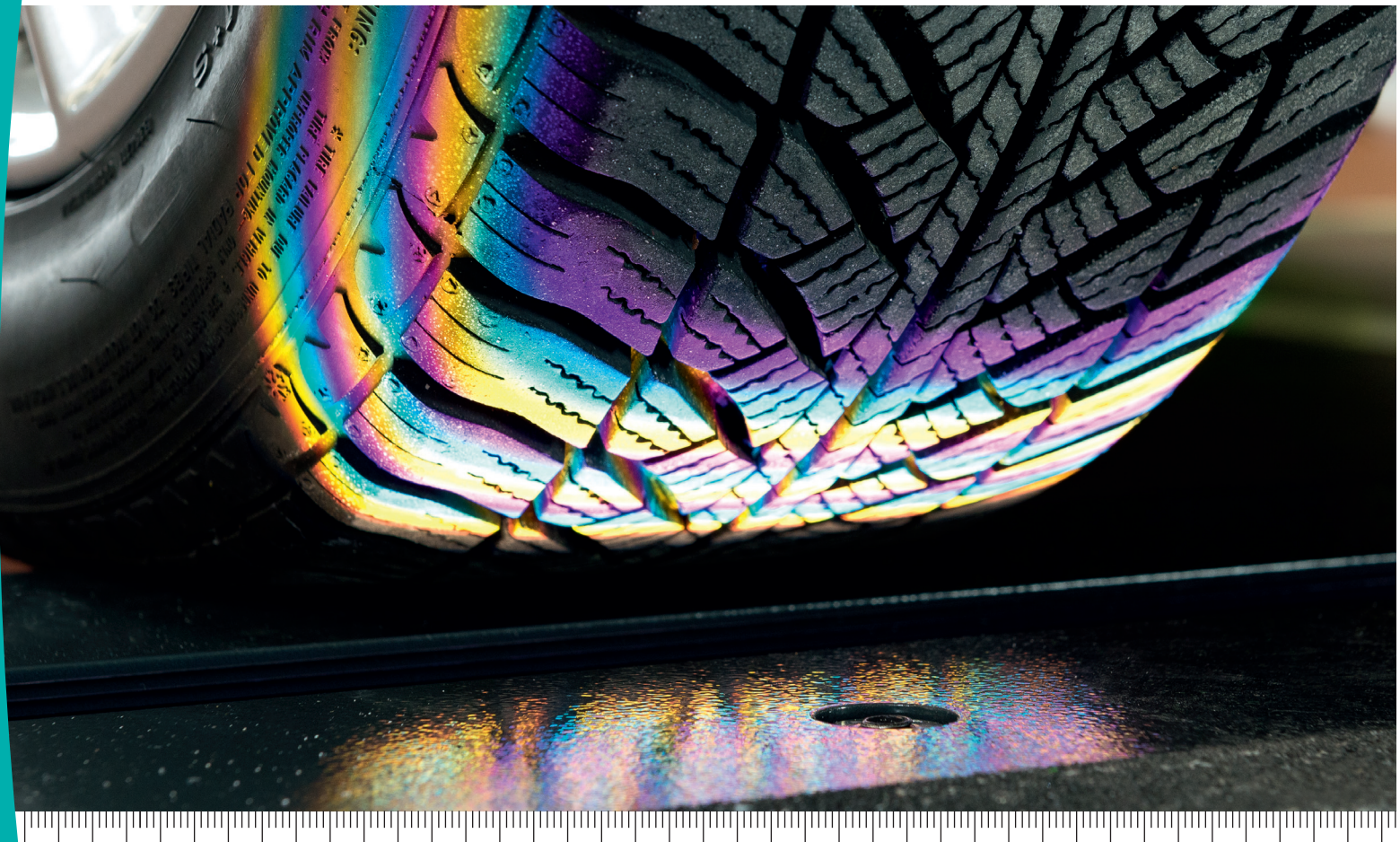


Beissbarth Easy Tread – Tire Tread Measuring with Leading Edge Technology



- Tire tread measurement in seconds
- Measurements starts as the vehicle passes over
- Precision & long life thanks to advanced camera technology

Quick and accurate results in seconds: Easy Tread tire depth measuring technology



Easy Tread instantly measures the tire condition as the vehicle passes over the measuring strip

Measuring for enhanced road safety

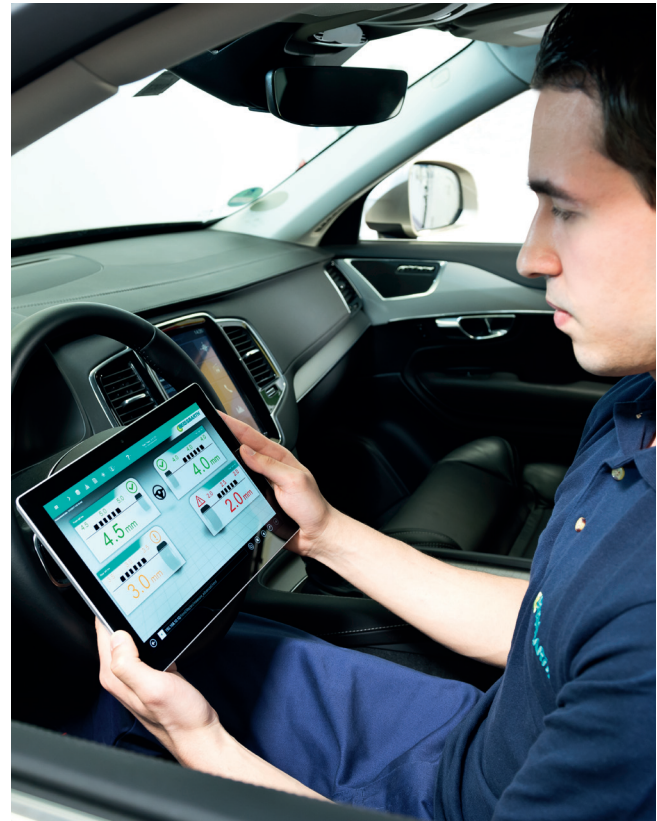
The tires are the only contact points between a vehicle and the road. The quality of this bond determines how safely the vehicle can accelerate and brake especially during hydroplaning. Transportation regulators across various municipalities are now increasing tire tread depth inspections and enforcements in a concerted effort to drive down vehicle accidents and casualties. At the same time, uneven tread wear provides a clear indication that a workshop needs to inspect a vehicle's wheel alignment as well as propose a thorough suspension analysis to the customer.

Increasing the customer satisfaction

Easy Tread is an important equipment for the reception bay, which will improve the process and save time. All 4 wheels get measured very fast and even before the driver alights from the vehicle, the measuring results are already available. With these results the operator finds an easy introduction into his overall vehicle consultancy. All results can be saved and are thus always available.



Convenient & optional workshop trolley. Quick input allows direct access to customer data, measurement values and central data storage



Optional tablets are also available for increased flexibility

Quick tests with Easy Tread

Beissbarth has developed a dedicated device series for fast tire tread measuring:

- Color-code projection measuring method
- No moving parts as with laser technology, hence no sensitivity against dust, vibration and moisture
- Robust against temperature deviations
- Low profile for uncomplicated measuring of performance vehicles
- Non-stop measuring
- Fast measuring within a few seconds
- Floor-mounted or underfloor variant
- Three display options

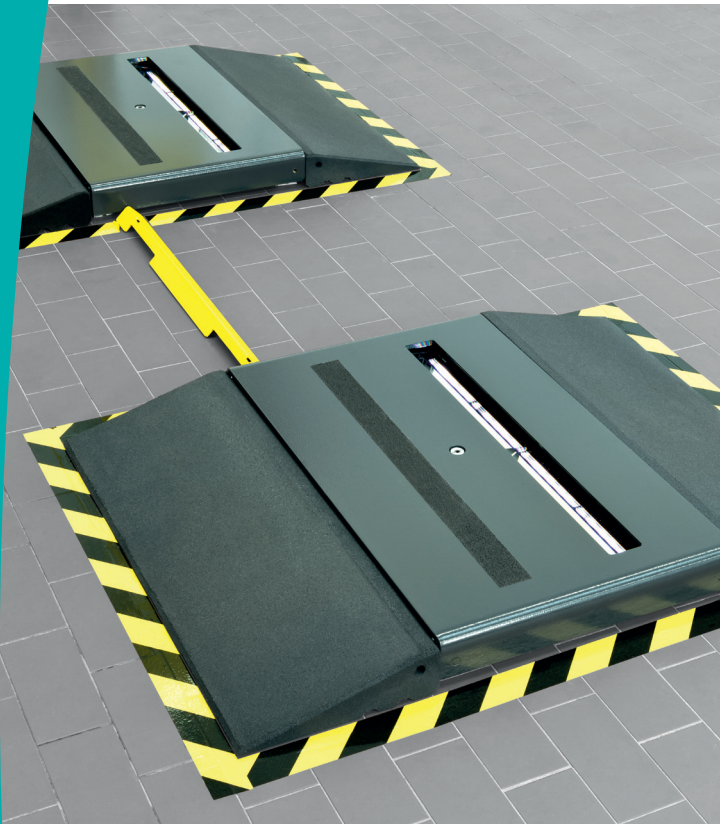


Easy Tread – perfect display solution for your workshop

Three different display options are available to suit your cost and workshop structure:

- Smart-TV display with measurement value indication for use in passage ways (above)
- Workshop PC in trolley with direct access to customer data, measurement values and central data storage (top left)
- Tablet for mobile measurements with high flexibility (top right)

Adaptable to any workshop: Tire tread measurement system using Beiss



Easy Tread low profile ramp variant

Easy Tread: the perfect solution for your workshop

- Easy Tread does not require a compressed air supply
- Easy Tread does not require an individual internet connection
- Both variants are suitable for installation indoors or outdoors in areas with open sides (roof only)

The software is logically structured and easy to understand for hassle-free operation.



Soon available

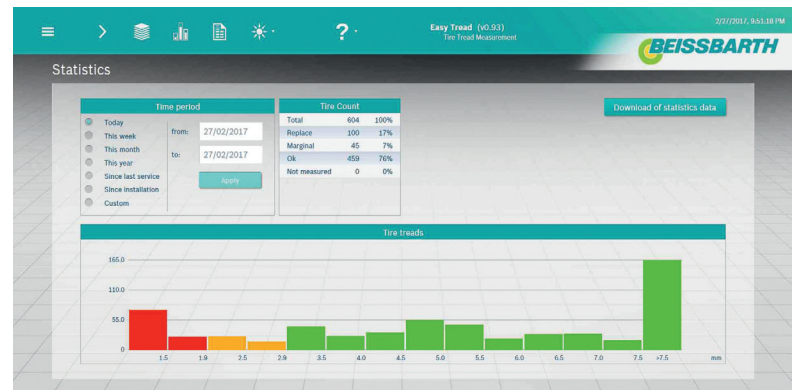
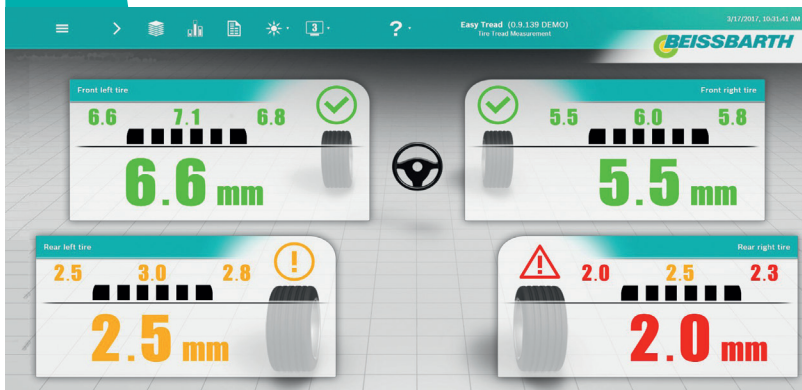
Easy Tread Flat floor mounted variant

Plenty space or hardly any: Easy Tread fits in

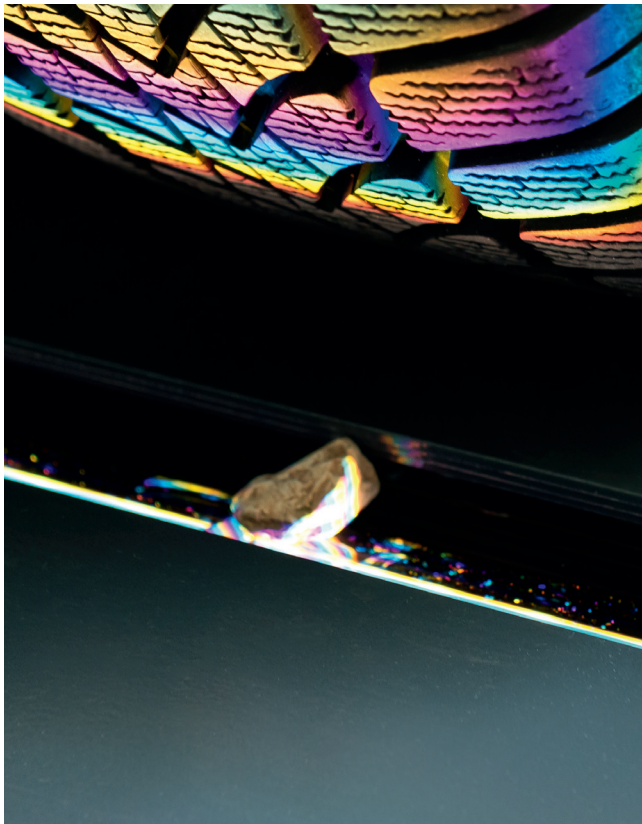
Two variants of the Easy Tread are offered to suit different workshop types:

- Low profile ramp: this Easy Tread variant is installed on the workshop floor very quickly. The hardware is attached using bolts and plugs
- Floor mounted variant: for new buildings or workshops with reduced available area in the workshop

Statistics of available measurements support the manager to increase the tire sales.



barth Easy Tread

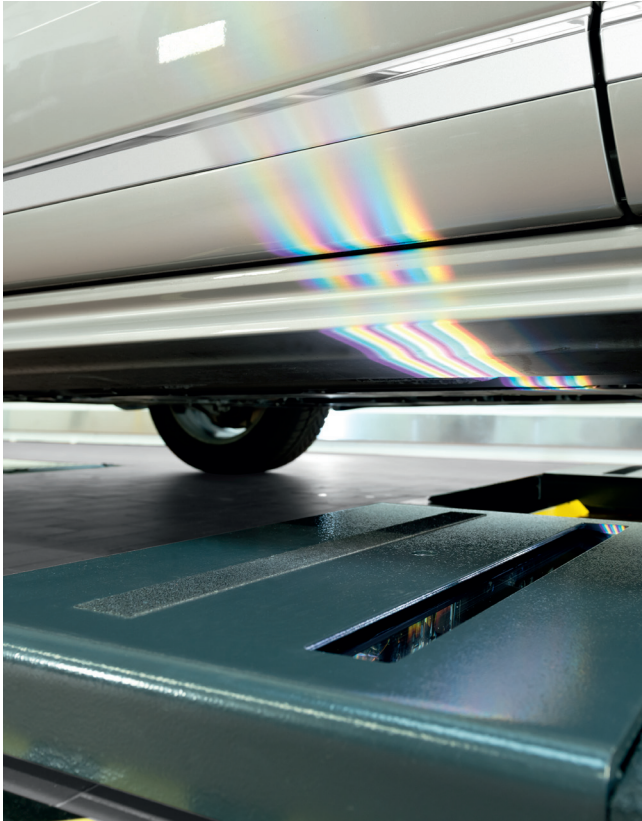


Small objects and soiling on the projection side have no effect on the measurement results

| Technical data | Low profile ramp variant | Floor mounted variant |
|--|--|---|
| Dimensions in mm (H x W x D) | 85 x 2,245 x 1,030 (3.3"x88.4"x40.6") | 85 x 2,330 x 560 (3.3"x91.7"x22.1") |
| Measuring accuracy | +/- 0.25 mm (+/- 1/64") | +/- 0.25 mm (+/- 1/64") |
| Max. tire width | 450 mm (17.7") | 450 mm (17.7") |
| Track | 1,080–1,820 mm (42.51"–71.6") | 1,080–1,820 mm (42.51"–71.6") |
| Max. speed | 8 km/h (5mph) | 8 km/h (5mph) |
| Mains supply | 100 to 230 VAC, 50–60 Hz, 1-phase | 100 to 230 VAC, 50–60 Hz, 1-phase |
| Max. axle load | 4 t | 4 t |
| Operating temp./ Operating range | 0–40 °C (32–104°F) | 0–40 °C (32–104°F) |
| Protection level of measuring modules | IP65 | IP65 |
| Software languages | 18 | 18 |

| Product | Description | Scope of delivery | Order number |
|-----------------|--|---|---------------|
| Easy Tread | Low profile ramp variant for standard installation | Ramps (4 pieces) Measuring units (2 pieces) Power supply Power and data lines (10 m) Scraper (1 piece) | 1 691 200 000 |
| Easy Tread | Low profile ramp variant for inspection pit | Ramps (4 pieces) Measuring units (2 pieces) Power supply Switch (1 piece) Power and data lines (10m / 32 Ft) Scraper (1 piece) | 1 691 200 001 |
| Easy Tread Flat | Floor mounted variant for standard installation | Measuring units (2 pieces) Power supply Power and data lines (10m / 32 Ft) Scraper (1 piece) | 1 691 200 002 |
| | Soon available | | |
| Easy Tread Flat | Floor mounted variant for pit installation | Measuring units (2 pieces) Power supply Switch (1 piece) Power and data lines (10m / 32 Ft) Scraper (1 piece) | 1 691 200 003 |
| | Soon available | | |

Durable, accurate and fast: Tire tread measurement system Beissbarth



Low-profile ramp variant



The measuring strip can be cleaned from the outside without opening mechanical components

Tire tread measuring of lowered vehicles

The floor-mounted Easy Tread has been engineered for a low profile to ensure suitability for vehicles with performance suspensions.

- Tread depth is measured non-stop as the vehicle passes across the Easy Tread at a max. speed of 8 km/h (5 mph)
- Measurement results are available within a few seconds

Designed to be tough, withstanding the typical workshop environment:

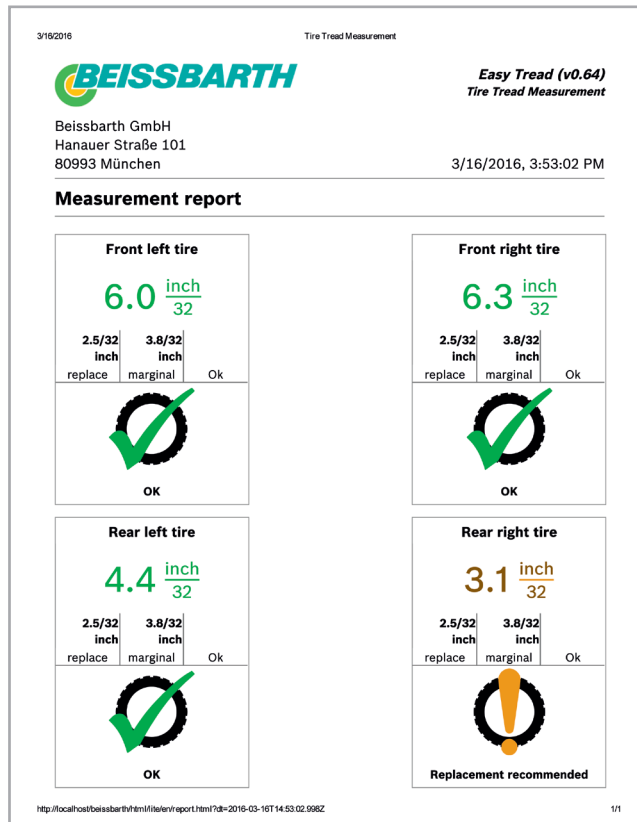
- No moving parts, contrary to laser technology
- Designed for axle loads up to 4 tons
- Developed to withstand more than 150,000 vehicle passages

Accessory

Order number

| | |
|---|---------------|
| Threaded Sleeve for tar floors (10 pieces) | 1 691 201 016 |
| Scraper | 1 693 740 218 |
| Shear Connector (10 pieces) | 1 691 201 017 |
| Steel frame for floor mounted version (2 pieces) | 1 691 201 018 |
| Trolley (incl. monitor, mouse and PC) Country specific keyboard needs to be ordered separately | 1 691 201 008 |
| Color printer | 1 693 770 415 |
| Reference object (for ISO 9001) | 1 691 201 014 |
| Cable guard extension approx. 0.7 m (2.3 feet) | 1 691 202 039 |
| Dehumidifying agent (2 pieces) | 1 691 201 005 |

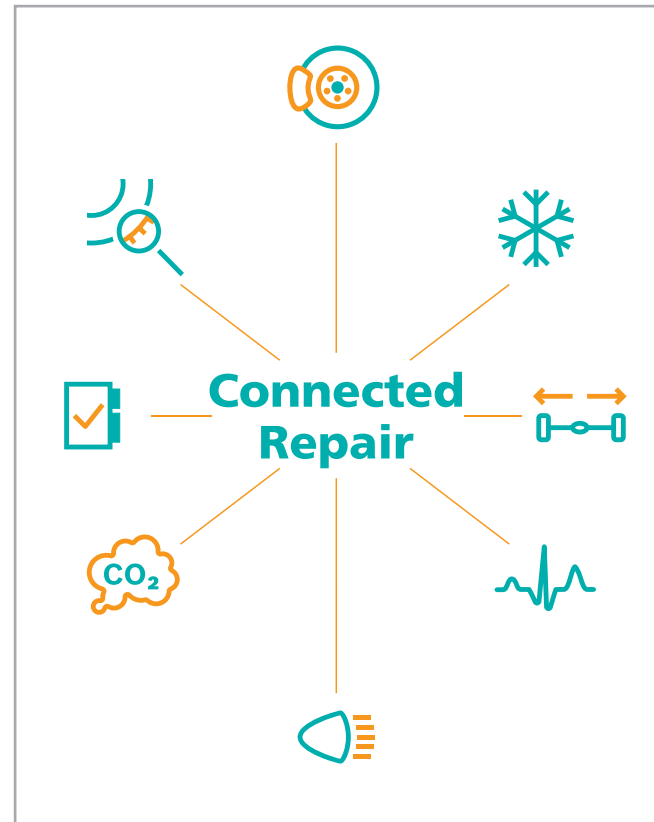
Easy Tread



Measurement result can be printed quickly on an A4-size paper

High processing speed through state-of-the-art camera equipment:

- Recording and processing of image sequences with high data volumes in less than 1/10 of a second
- Display of measurement results within 5 seconds after the rear axle has crossed the strip



Network-integrated: Connected Repair

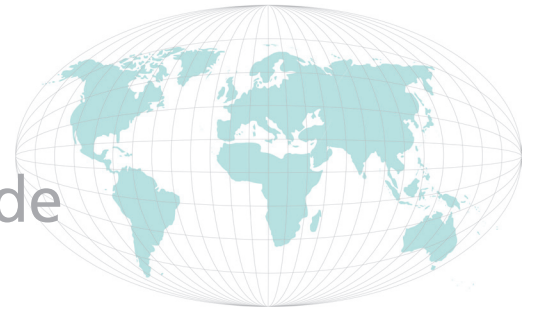
Additional benefit – Connected Repair Software:

When running on a Windows-based system, the Easy Tread software can allocate measurement results to orders and save them as data sets. Saved measurements can be viewed at any time in the customer's order history.

Intelligent integration – Connected Repair:

Connected Repair is a server-based software solution. The central communication platform simplifies and accelerates work processes on all connected devices. Customer and vehicle data as well as orders and measurement results are available from a central memory location to all connected workplaces. The integration of workshop devices in a network allows access to any data entered at any time.

Beissbarth Service worldwide



Service from Beissbarth Munich:

- Immediate telephone support
- Rapid replacement parts deliveries
- Individual maintenance contracts

Factory customer service:

Beissbarth and certified partner companies provide on-site assistance with installation, instruction, equipment assembly and maintenance – with partners in more than 90 countries around the world.

Training Centre:

Instruction and training at STC
of Robert Bosch GmbH, 73207 Plochingen

Software Centre:

Technical documentation, specified vehicle data
and marketing material for immediate download:
www.beissbarth.com



Subject to technical modification and changes to scope of delivery.
Pictures may sometimes show special accessories or similar
versions. Please contact your Beissbarth dealer for a binding
up-to-date quotation.

Local distributor:

Beissbarth GmbH
A Bosch Group Company
Hanauer Strasse 101
80993 Muenchen (Munich, Bavaria)
Germany

Tel. +49-89-149 01-0
Fax +49-89-149 01-240

www.beissbarth.com
sales@beissbarth.com

